

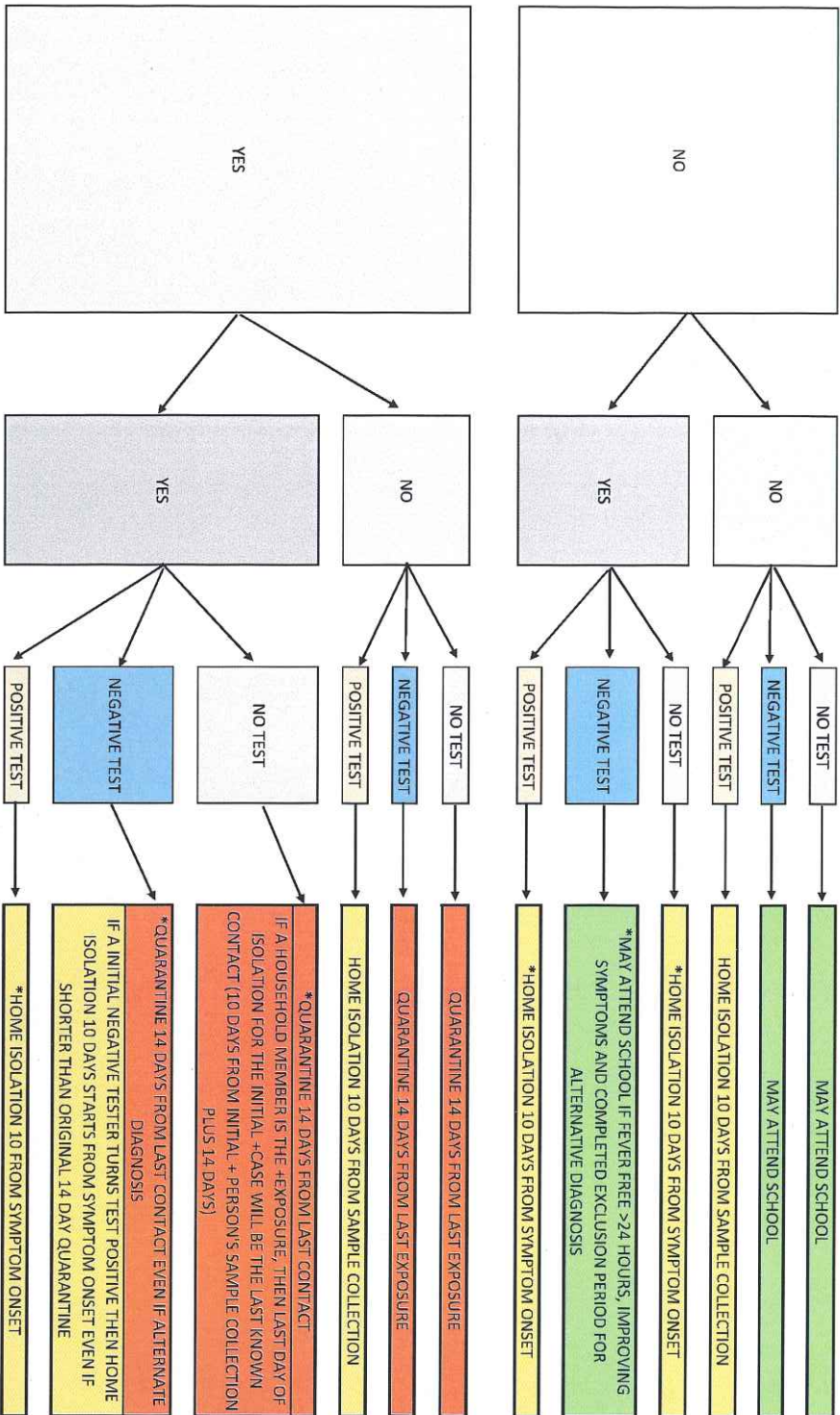
INDIANA STATE DEPARTMENT OF HEALTH COVID-19 RETURN TO SCHOOL GUIDELINES (8/24/2020)

KNOWN CLOSE CONTACT TO COVID-19 + CASE?

**SYMPTOMATIC?

TESTED?

DISPOSITION?



Info extracted from original ISDH PDF at https://www.coronavirus.in.gov/files/20_Return%20to%20School_8-25-20.pdf

CLOSE CONTACT DEFINITION

- Was within 6 feet of a positive person for more than 15 minutes total in a day.
- Had physical contact with the person.
- Had direct contact with the respiratory secretions of the person (i.e., from coughing, sneezing, contact with dirty tissue, shared drinking glass, food, or other personal items).
- Lives with or stayed overnight for at least one night in a household with the person.
- These close contact criteria apply regardless of mask use, face shields, or physical barriers, such as Plexiglas or plastic barriers.
 - The only exception is if a healthcare worker in a school setting is wearing the proper personal protective equipment. When an individual's symptom, contact, or test status changes, the quarantine or isolation requirements should be reassessed.

**SYMPTOMS OF COVID-19

- ORAL Temp $\geq 100.4^{\circ}\text{F}$ (or school board policy if threshold is lower)
- Sore throat
- New uncontrolled cough that causes difficulty breathing (OR for students with chronic allergic/asthmatic cough, a change in their cough from baseline)
- Diarrhea, vomiting, or abdominal pain
- New onset of severe headache, especially with a fever
- Loss of taste or smell

***AND MUST BE FEVER FREE FOR 24 HOURS WITHOUT ANTIPIRETTIC MEDICATION USE AND IMPROVING SYMPTOMS**